

# Minotaur Product Presentation



# Minotaur Product Information



## CTT Minotaur

**The computer-supported test and training system (CTT) for the effective treatment of back and neck problems**

### **Neck and Back**

Often the neck and shoulder area are named as source of back problems. CTT MINOTAUR addresses this problem and offers a detailed diagnosis and treatment solutions for the cervical spine and back musculature.

# Minotaur Product Information



## Diagnosis and treatment of the neck and back musculature: CTT MINOTAUR with BioMC Software

- Measurement of the range of motion of the cervical spine in the transversal plane. That way, it is possible to objectify existing deficits of the range of motion, define treatment targets and document the recovery progress
- Measurement of the exertion of strength of the musculature of the cervical spine in the anatomic main planes (in any measuring position in the transversal plane). Any specific measuring point is exactly reproducible. The measuring position can be locked, the measured values (of the chosen effective directions) are stored and displayed as polar (radar) charts

# Minotaur Product Information



## Diagnosis and treatment of the neck and back musculature: CTT MINOTAUR with BioMC Software

- Measurement of the exertion of strength of the joint motor function of the thoracic and lumbar spine segment in an upright sitting position
- Execution of a specific training (treatment) of the sensomotor systems of the cervical spine joint motor function under isometric and auxotonic working conditions. The training aims at reducing existing muscular imbalances and deficits and at restoring and improving the natural range of motion and resilience of the spine in that segment
- Networking of the device and storage of data for an efficient execution of tests and training

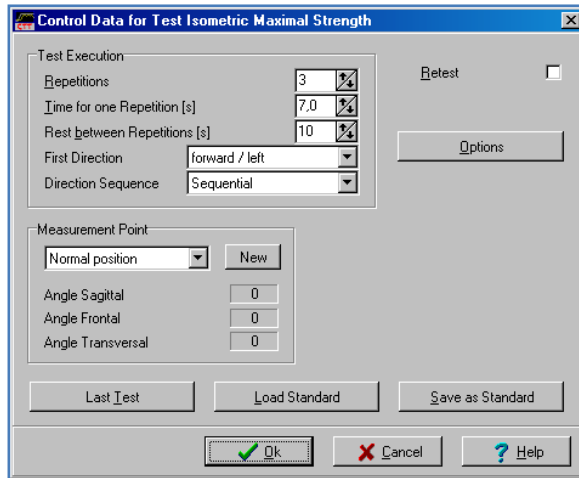
# Minotaur Indications



## Indications

- Vertebral syndromes with advanced symptoms: prolapsed vertebral disc (including post-operative) and protrusions beyond the acute stage / degenerative changes / cases of spondylolysis and spondylolisthesis / vertebral injury in the context of conservative or post-operative treatment / Recurring vertebral disc complaints with substantially reduced working capacity
- Functional back pain with or without degenerative changes
- Spinal muscular weakness and/or imbalance

# BioMC for Minotaur



## Application Software BioMC for Minotaur

### 1. Device Control

- Fast execution of a test of the isometric maximal strength in the sagittal, frontal and transversal plane for diagnosis of imbalances (comparison of opposing directions) and deficits (comparison of measured values and reference values)
- Customizable test of the isometric maximum strength in any plane or direction
- Training for the treatment of imbalances and deficits

### 2. Operator Management

- Password protected patient data with variable operator rights for different operator groups

# BioMC for Minotaur

The screenshot shows a software window titled "Enter Data for a new Patient" with a standard Windows-style title bar (minimize, maximize, close buttons). The window has a tabbed interface with tabs for "Patient", "Address", "Additional Information", and "Treatment". The "Patient" tab is active. The form contains the following fields and controls:

- Patient Number:** An empty text input field.
- Name:** A text input field containing "Mustermann".
- First Name:** A text input field containing "Max".
- Date of Birth:** A date input field containing "12.03.1968".
- Place of Birth:** An empty text input field.
- Sex:** Radio button controls for "Male" (selected) and "Female".
- Height [cm]:** A numeric input field containing "170" with a percentage symbol and a small icon.
- Weight [kg]:** A numeric input field containing "70.00" with a percentage symbol and a small icon.
- Password:** A text input field.
- Password Confirmation:** A text input field.

At the bottom of the window, there are four buttons: "Save", "New Patient", "Close", and "Help".

## Application Software BioMC for Minotaur

### 3. Patient Management

- Definite assignment of diagnosis and therapy data
- Comprehensive management of anthropometric and general data

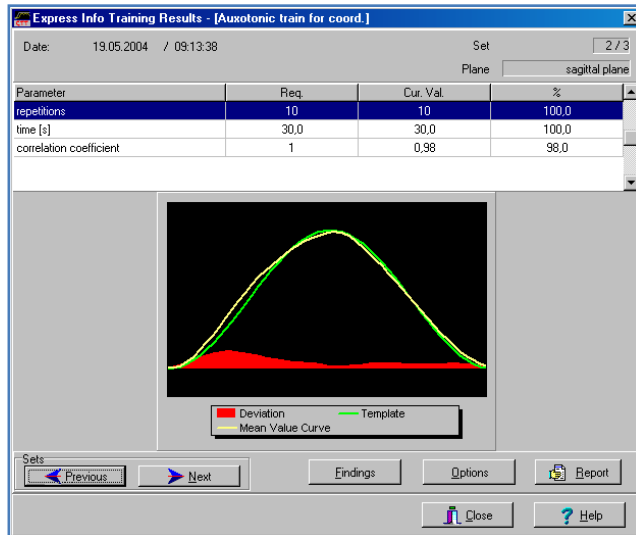
### 4. Treatment Management

- Management of different treatments including a clear overview for the cost documentation

### 5. Hardcopy Reports

- Adjustable diagnosis and therapy reports on paper for documentation and archiving

# BioMC for Minotaur



## Application Software BioMC for Minotaur

### 6. Pretest/ Posttest-Comparison

- Therapy success clearly visible (result presentation and documentation)

### 7. Training progress

- Therapy progress clearly represented



# Minotaur Product Specifications



## Dimensions and Weight

- Width: 0.80 m
- Depth: 1.40 m
- Height: 2.10 m
- Weight: 250 kg

